



Elevate

Elevating children's ministry to a whole new level.

I LOVE GOING TO DISNEY WORLD.

Every time I walk through the gates of the Magic Kingdom the sights and sounds take me back to the joys of my childhood years when I visited the Disney parks. From the moment I step into the park, until the day ends with the closing fireworks, only one word can describe the experience...magical.

Disney knows that when you have a "magical" experience at their park, you will be excited to return. Disney also knows that a great experience at their theme parks will not only develop a fondness for the parks themselves, but also for the *idea* of Disney. Positive feelings for the parks lead to positive feelings for Disney. That's the way it is for me. Emotions like joy, hope, wonder, and excitement still well up inside me when I hear the word Disney because of my childhood experiences at the theme parks.

In thinking about this, I can't help but ask the question: why can't children develop the same feelings for God at church? Why does the world get to have all of the awe and wonder of life and the church settle for less?

"WHY CAN'T A CHILD'S EYES BE AS WIDE WHEN THEY WALK INTO THE DOORS OF YOUR CHURCH, AS THEY ARE WHEN THEY WALK THROUGH THE GATES OF CINDERELLA'S CASTLE."

Why can't a child's eyes be as wide when they walk into the doors of your church as they are when they walk through the gates of Cinderella's Castle?

When the kids of your church hear the word "God," they should feel love, hope, wonder, awe and excitement. Their heart should skip a beat from the joy that His name brings to their mind. In much the same way as the awe of Disney is developed at their theme parks, the love of Christ should be developed at your church.

At this point you're probably saying to yourself, "Get real. There is no way that our church is equipped to do that...we're not Disney!"

That's a fair statement. The *dilemma* you face is that you are a *church*. Your budget is dependant on giving, not profit. You don't have the vast resources of a media empire. You don't have thousands of highly trained employees. You have great volunteers, but even the most dedicated are only donating a portion of their time.

And what about you? You would love to, but you don't have the time to develop an eye-popping, awe inspiring program every weekend for your kids. You have to care for the people in your ministry, carry out the duties of the church, and then watch over the one thing that nobody else can...your own family. You don't have the time, the money or the people to consistently put together



Images shown are part of the On the Trail Series



an amazing weekend program that will get kids excited to return, anxiously looking forward each weekend to experience God.

It's from an understanding of this dilemma that ELEVATE was born. ELEVATE is a brand new children's curriculum produced by Fellowship Church. In producing it, we want to partner with you in an attempt to give every child in your church the best possible experience. Through ELEVATE, we can work together to give children the gift of a *life-long love* for the local church. A gift they will always cherish because it is at church that the child's love for God is constantly renewed.



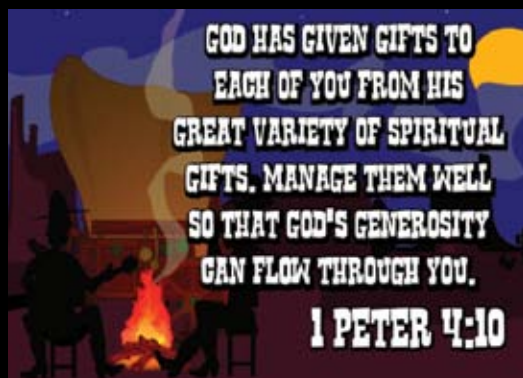
ELEVATE is designed to develop joy, hope, wonder, excitement and a love for Jesus Christ in the hearts and minds of your children. ELEVATE gives you high quality teaching elements that are simple to use and understand. It works within your strengths, allowing you to do the things you do best while providing the tools to do what you can't.

In short, Elevate does all of the leg work to make your weekend service the best it can be, leaving you time to do the most important thing in your ministry: develop Christ-impacting relationships with your children, parents and volunteers.



We are excited to have Jeremy Vickery working with us on the Elevate project. Jeremy currently works as a Lighting Artist for Pixar Animation Studios in Emeryville California. You can see his name in lights on "The Incredibles", and he's currently working on Pixar's next hit, "Cars" (summer 2006 release). Formerly, Jeremy worked in Atlanta at Fathom Studios as a general artist on the yet-unreleased film "Delgo" (<http://www.delgo.com>). Before that he was in Chicago at Big Idea Productions as a Modeling/Texturing Artist/Concept designer, helping to make several of the popular "Veggie Tales" videos and their feature film "Jonah".

“ELEVATE DOES ALL OF THE LEG WORK TO MAKE YOUR WEEKEND SERVICE THE BEST IT CAN BE, LEAVING YOU TIME TO DO THE MOST IMPORTANT THING IN YOUR MINISTRY: DEVELOP CHRIST-IMPACTING RELATIONSHIPS WITH YOUR CHILDREN, PARENTS AND VOLUNTEERS.”



ELEVATE IS BIBLICALLY DRIVEN

Each ELEVATE session centers on either a Bible story or a Bible concept. ELEVATE teaches children the foundational lessons of the Bible with application for their lives today. This is the heart and soul of every lesson. We believe that style and presentation are important, but only if there is something worth presenting. That “something” is the Bible.

ELEVATE IS CREATIVELY PRESENTED

ELEVATE uses theme-based, character driven lessons that will immerse your children in a world of solid biblical teaching that is creative and fun. Along with weekly animations, cool music, kid pleasing graphics and creative teaching elements, you will find each eight-week series has a different themed look and feel. This allows you to have ever-changing surroundings that your kids will love. Your children will never get tired of church, because you re-invent yourself every eight weeks. (Even Disney doesn't do that!)

ELEVATE IS EASY TO USE

ELEVATE includes DVD's with filmed examples of the Bible story, skit and small group activities for every lesson in every series. This takes the guesswork out of your teaching. Each volunteer will receive a DVD and Help Sheet that will show them exactly what they need to do with



their kids – all for less than the price of a traditional leader's guide. You and your volunteers will no longer have to sit up late the night before your services trying to decipher what someone else wrote. ELEVATE actually shows you what to do, allowing you to learn it in a fraction of the time. This will give a consistent excellence to your ministry. Why? Because if you want someone to do something a certain way, the best training is to actually show them what you want them to do! And, to top it all off, the filmed Bible story and skit will be production quality so that you can show them to your kids if you don't have the people needed to perform them live!

ELEVATE IS FLEXIBLE

ELEVATE is flexible enough to be used in a classroom of five kids or a Children's Worship setting with 300. It can work on the weekends, mid-week or any other time you want to teach kids. Whatever you need, the elements of ELEVATE will work with you.

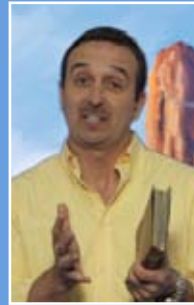
ELEVATE IS AFFORDABLE

Growing up in a small church, I know that budget money is often tight. Because of that we want to do everything we can to make ELEVATE affordable for you. ELEVATE works within your budget, allowing you to order only what you need, so there's no more leftovers at the end of a series. You print what you need and save your money for other things. If you compare the price of ELEVATE with similar products, you will be amazed at how low the cost is.



Let's work together to give our children the awe, wonder, love and excitement for God that the church was designed to give. Let's work together to immerse our children in an experience that will give them solid Biblical teaching in a creative and fun environment. Let ELEVATE give you confidence that week in and week out you're teaching children something that will change their lives forever.

Oh, and in case you're wondering, the church isn't Disney. It's better!



Mike Johnson has been the Children's Pastor of Fellowship Church for over twelve years. Mike graduated from Dallas Theological Seminary in 1993 with a Masters degree in Biblical Studies as well as a Masters degree in Christian Education (with a Children's emphasis.) In his spare time, Mike enjoys sculpting, carpentry, and most of all spending time with his wife Karry and their two daughters, Kaitlynn and Annie. (Oh yeah, and an occasional trip to Disney World.)



During the first year of Elevate, your children will spend 8 weeks in each of these lands.

- 1** Winter EXTREME!
Learning to live EXTREME! Lives for God
- 2** Heroes
An epic adventure with the Bible's heroes
- 3** Treasure Quest
A jungle expedition through the life of Christ
- 4** Shipwrecked!
A journey of discovery through the life of Paul

- 5** Berry Blast Theme Park
A thrill ride through the Fruit of the Spirit
- 6** On the Trail
A wild-west cattle drive through the Exodus of Israel
- 7** Adventures in Science
An "explosive" exploration of the miracles and mysteries of the Bible

For more information:
Call or visit creativepastors.com

"THROUGH ELEVATE WE CAN WORK TOGETHER TO GIVE CHILDREN THE GIFT OF A LIFE-LONG LOVE FOR THE LOCAL CHURCH. A GIFT THEY WILL ALWAYS CHERISH BECAUSE IT IS AT CHURCH THAT THE CHILD'S LOVE FOR GOD IS CONSTANTLY RENEWED."